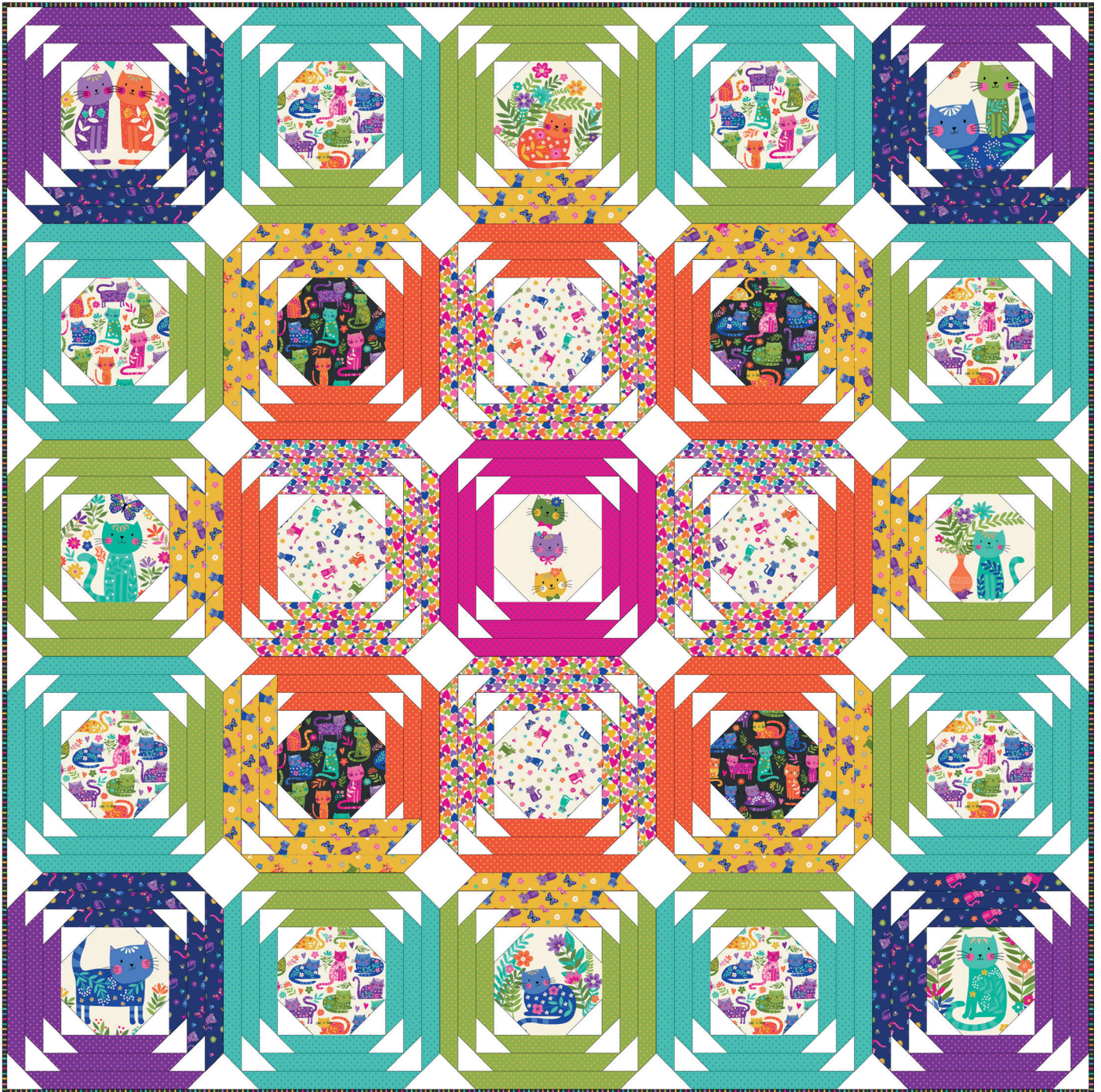


# Katie's Cats

Finished size 60" x 60" (152cm x 152cm)  
by Lynne Goldsworthy of [lilysquilts.blogspot.com](http://lilysquilts.blogspot.com)



makower uk

# Katie's Cats

Finished size 60" x 60" (152cm x 152cm)  
by Lynne Goldsworthy of [lilysquilts.blogspot.com](http://lilysquilts.blogspot.com)

## Fabric Requirements

Design	Amount	Cut
830 GY	60cm / 24"	Thirteen 1 ½" WOF strips cut into twenty 6 ½", 8 ½" and 10 ½" lengths
830 LP	30cm / 12"	Six 1 ½" WOF strips cut into eight 6 ½", 8 ½" and 10 ½" lengths
830 NY	40cm / 15"	Eight 1 ½" WOF strips cut into twelve 6 ½", 8 ½" and 10 ½" lengths
830 PL	FQ	Six 1 ½" WOFQ strips cut into four 6 ½", 8 ½" and 10 ½" lengths
830 TB	75cms / ¾ yard	Fifteen 1 ½" WOF strips cut into twenty-four 6 ½", 8 ½" and 10 ½" lengths
2347 S (binding)	50cms / ½ yard	Six 2 ½" WOF strips
2348 Q	40cms / 15"	Eight 6 ½" squares
2348 Q (backing)	3.5m / 3 ¾ yards	Two equal lengths
2348S	FQ	Four 6 ½" squares
2349 B	30cm / 12"	Six 1 ½" WOF strips cut into eight 6 ½", 8 ½" and 10 ½" lengths
2349 Q	FQ	Four 6 ½" squares
2349 Y	40cm / 15"	Eight 1 ½" WOF strips cut into twelve 6 ½", 8 ½" and 10 ½" lengths
2350 Q	40cm / 15"	Eight 1 ½" WOF strips cut into twelve 6 ½", 8 ½" and 10 ½" lengths
2352 1 Panel	One panel 60cms / 24"	Cut eight 6 ½" squares from the panel and one 3 ½" x 6 ½" strip from the vertical cat heads image for the centre block of the quilt
2000 W02 (BKG)	1.75m / 2 yds	Twenty-five 2 ½" WOF strips cut into 400 2 ½" squares One 2" WOF strip cut into two 2" x 6 ½" strips
Wadding - 66" square - 279 Cotton Mix 80-20 from <a href="http://www.vlieseline.com/en">http://www.vlieseline.com/en</a>		
Threads - Aurifil 50wt for piecing and 40wt for quilting from <a href="http://www.aurifil.com">http://www.aurifil.com</a>		

## Notes:

- **Make sure to visit <http://www.makoweruk.com/projects/> to ensure you are working from the most up-to-date version of the pattern**
- Read the pattern in full before starting
- ¼" seams are used throughout except where stated otherwise
- Press after each seam, pressing seams open or to one side as preferred
- WOF - width of fabric - a strip of fabric cut from selvedge to selvedge
- WOFQ – a strip of fabric cut from selvedge to centre cut on a FQ
- BKG - background

## Making the Quilt Top

1. Sew the two BKG 2" x 6 ½" strips to either side of the vertical strip of three cat heads taken from the panel.



2. Draw a diagonal line on the back of all of the BKG 2 ½" squares.
3. Place four of these squares right sides together with four corners of one of the 6 ½" print or panel squares or the piece made at 1 above and sew along the diagonal lines (fig 1). Trim away excess fabric ¼" beyond the seam line (fig 2) and press over (fig 3).

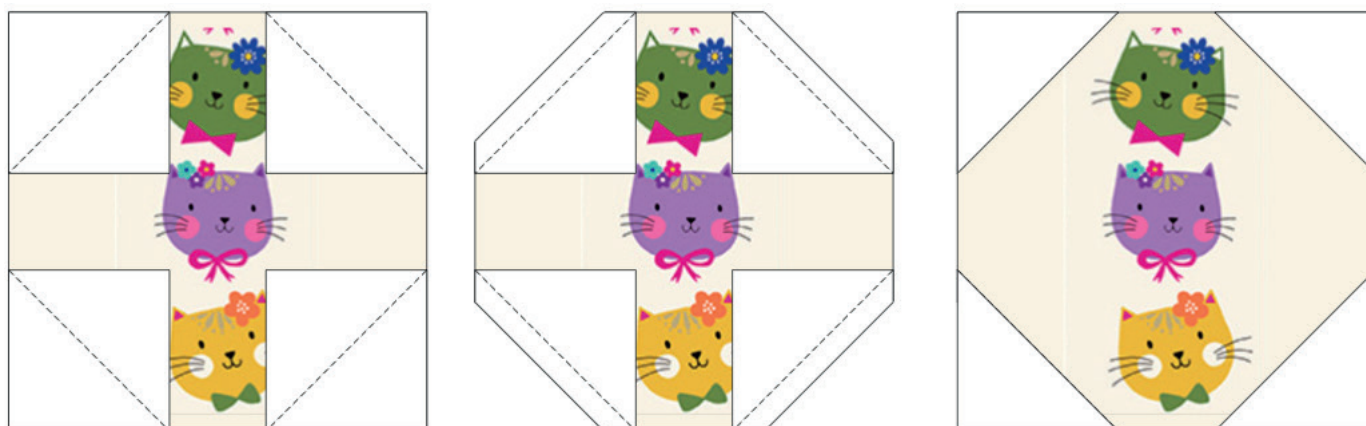


fig 1-3

4. Sew 1 ½" x 6 ½" sashing strips to either side of that square and press over. Sew two more to the top and bottom and press over (fig 4).
5. Add BKG triangles to the four corners of this piece as you did at step 3 (fig 5).
6. Continue to add rounds of sashing strips – 8 ½" then 10 ½" and BKG triangles in the same way to make each block. (fig 6). Take care to follow the fabric placement of the sashing strips as shown in the main quilt image.

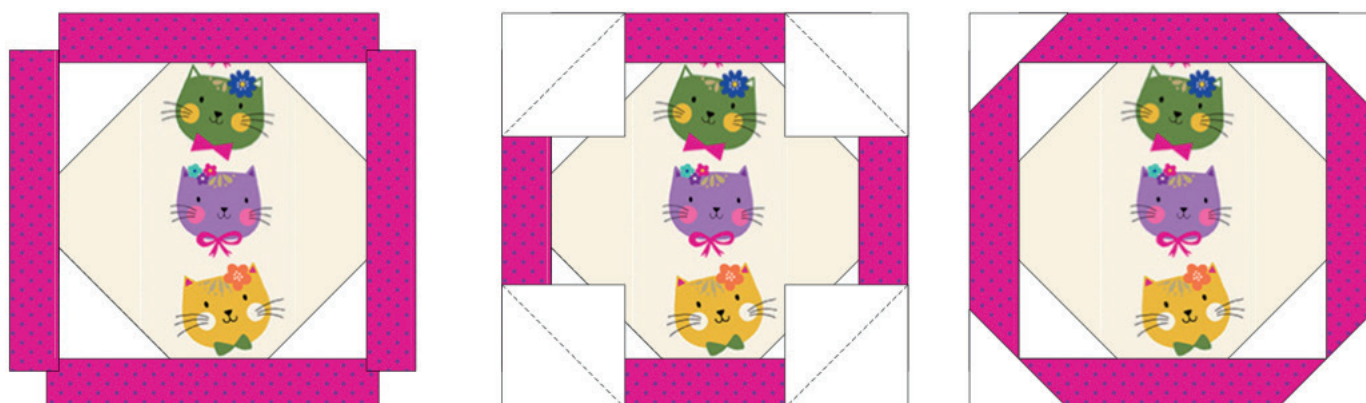


fig 4-6

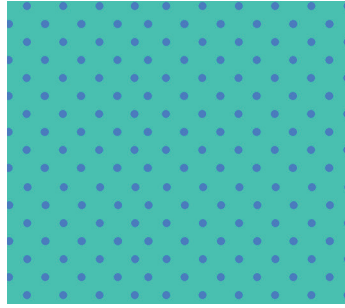
7. Sew the blocks into five rows of five then sew those rows together to finish the quilt top.

## Finishing the quilt

1. Sew the binding strips end to end using diagonal or straight seams as preferred and press wrong sides together along the length to make a double fold binding.
2. Sew the two pieces of backing fabric together. Make a quilt sandwich, basting together the back, the wadding and the top.
3. Quilt as desired then trim square, removing excess wadding and backing. We quilted a diagonal cross hatch of wavy lines approx. 1 ½" using a cream 40wt Aurifil thread on the front and back.
4. Bind, taking care to mitre the corners.



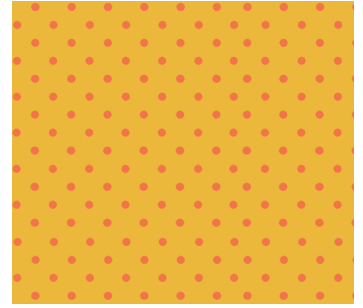
\*2348/Q Cats Allover



830/TB Spot



\*2348/S Cats Allover



830/YN Spot



\*2350/Q Hearts



2347/Q Chalky Stripe



\*2350/S Hearts



2347/S Chalky Stripe



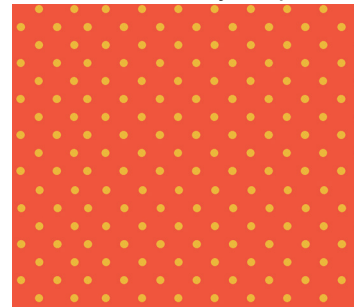
\*2349/B Scattered Cats



830/PL Spot



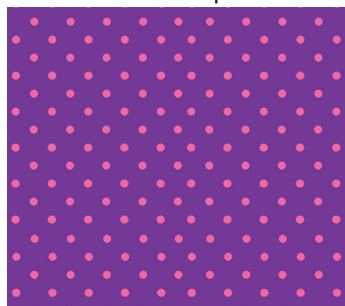
\*2349/Y Scattered Cats



830/NY Spot



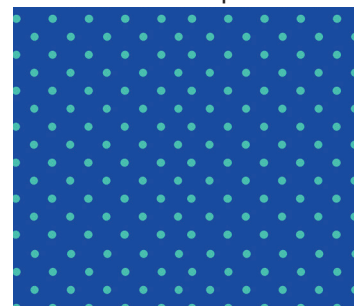
\*2351/Q Ditzy Flowers



830/LP Spot



\*2351/S Ditzy Flowers



830/BT Spot



\*2349/Q Scattered Cats



\*2352/1 Panel

Each panel 60 x112cms (24" x 44")



830/GY Spot